

INTRODUCTION

The software enables an engineer to program the digital door panel and 2210 concierge using a PC. The connection to the device is RS232 via a stereo jack socket. A Stereo jack to 9 pin D type connector is supplied along with a USB converter to enable connection to PC's without an RS232 connection. The software can be used to program both 2200 and 2300 digital panel as well as the 2210 concierge. For technical support using this program please call 0191 224 3174.

SOFTWARE INSTALLATION

First, install the USB driver from the supplied CD. This is required to use the Art.481 USB converter supplied in the kit.

Insert the 2X00PC CD into the CD drive of the PC. Wait for the autorun to begin.



From the start up screen choose one of the following options: -

INSTALL	Install the 2X00PC programming software on your PC
MANUAL	View the pdf version of this manual
BROWSE CD	Browse the CD for other files and programs
EXIT	Exit the start up program
EMAIL TECHNICAL	This will open your default email program so that you can send an email to the Videx technical support.
EMAIL SALES	This will open your default email program so that you can send an email to the Videx sales department.
ADOBE READER	If you do not already have a pdf reader to view the pdf version of the manual, click here to install a free pdf reader.

If the autorun does not begin automatically, explore the CD and run the autorun.EXE program.

Install the program to your PC by clicking on the INSTALL button from the start up screen or alternatively browse the CD and select setup.exe from the route of the CD.

The 2X02PC program will appear in your start menu and as a short cut to the desktop.

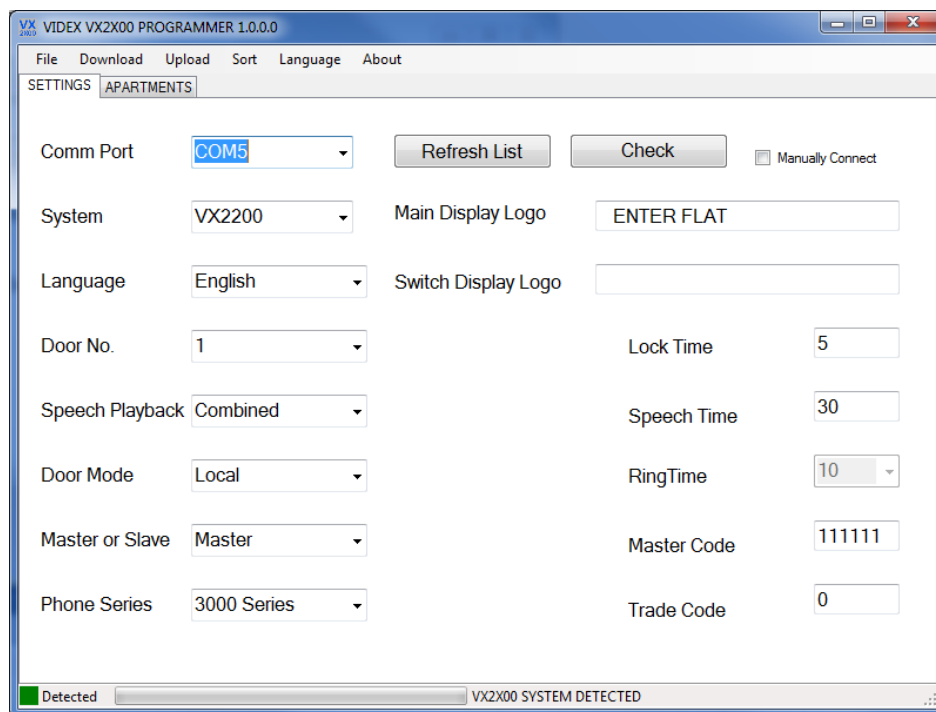
HARDWARE SETUP

Both a USB converter (ART.481) and an RS232 cable are supplied. If your PC has an RS232 port you don't need to use the USB converter, simply plug the jack plug end of the RS232 cable into the device and the D type 9 pin plug end into a spare RS232 port on the PC.

When using the Art.481 USB converter first ensure the driver has been installed from the CD provided. Connect the D type 9 pin plug from the RS232 cable into the D-type socket on the 481 converter. Connect the USB cable between the 481 and a spare USB port on the PC.

ENSURE THE RS232/RS485 SWITCH ON THE ART481 IS SWITCHED TOWARDS RS232.

RUN THE PROGRAM



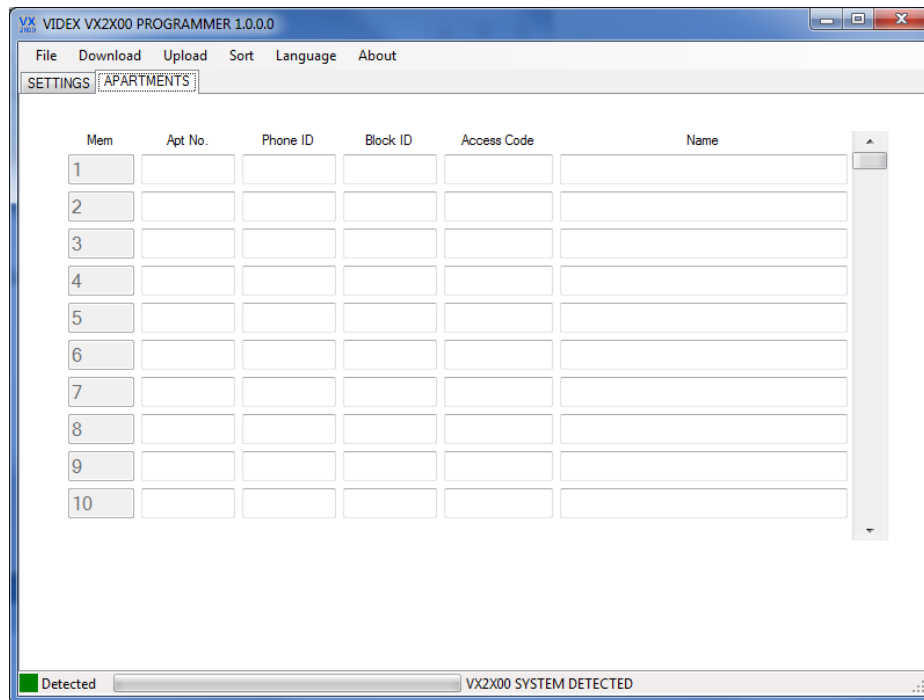
A screen shot of the main screen is shown above. There are two tabs separating the user data from the common settings data. Additionally there are a number of menu options. When you run the program it will attempt to connect to the Videx device. If the connection is successful it will be indicated on the status bar at the bottom of the form as shown above. If the connection is not detected check the connection to the Videx device and ensure the Videx device is powered up (In the case of the 2210 concierge, ensure the concierge is in OFF mode), then click on the REFRESH LIST button to refresh the list of available ports and click CHECK to check all available ports for the Videx device. It is also possible to manually connect to a device if you know the comm. Port number it is connected to. To do this first select the comm. Port from the drop down menu then tick the 'Manually Connect' button. The following offers an explanation of each programmable option: -

SETTINGS TAB

- **System** – Choose from 2200 or 2300 depending on the system to be programmed.
- **Language** – The language on the LCD display can be set to one of the following :-
 - English
 - Italian
 - Spanish
 - Portuguese
 - French
 - German
- **Door No.** – The door number can be set from 1 to 15 and will indicate to a concierge which door the call was initiated from. It will also allow the concierge to call back the door and open the door without first being called. On video systems it enables the users to recall the door by door number.
- **Speech playback** – The Videx panel can be set to verbally announce stages of a call (Only available in English at present). The can be disabled or enables with setting for speaking numbers as pressed or combining the numbers to speak as a whole (i.e. Speak One hundred as appose to One Zero Zero).
- **Door Mode** – When the door panel/concierge is set as main it should be connected to the main side of a 2206N bus exchange device. If the system does not include 2206N bus exchange devices or the door panel is connected to the block side of a 2206N device then it should be set as local.
- **Master/Slave** – On a single level system there should be only one master panel. All other panels should be set as slaves.
- **Phone Series** – Select the model of telephone/videophone used on the system. Note: If you are not using 3161, 3162, or a 900 Series phone then this should be set to 3000 Series for all other models.
- **Main Display logo** – This logo will be displayed on the top line of the display. The bottom line will say [<- OR SEARCH ->] if the panel is a scroll type or NUMBER if it is a standard numerical or alpha panel. It can be up to 16 characters long (e.g. ENTER FLAT, ENTER OFFICE etc)
- **Switch display logo** – The display will switch between the main display and this logo. This logo could be used to show the building name etc. (Max. 16 characters) The bottom line will be blank when this logo is on show. (Leaving this blank will result in main logo being shown at all times.)
- **Lock time** – The lock open time can be set from 1 – 255 seconds

- **Speech time** – The speech time can be set from 1 – 255 seconds
- **Master code** – This code is used to gain access to the programming. Default is 111111.
- **Trade access code** – This code can be used to gain access only when the time clock input is shorted. If no code is required enter a 0.

APARTMENTS TAB



Depending on the device being programmed up to 998 apartments can be programmed with the following data.

- **Memory location** – The memory location is not editable and only indicates the position in the door panel’s memory where the information will be stored.
- **Apt No.** – The apartment number can be up to six digits long and is the number that the caller will type into the panel to make the call.
- **Phone ID** – The binary dip-switch setting on the telephone. The dip-switch setting should be set prior to powering up the system.
- **Block ID** – The block ID is only relevant when a panel is set to main. Local panels do not need this setting. The block ID is the address of the 2206N for which the apartment is connected to. The addresses can range from 1-15.
- **Access code** – Each tenant can have a personal access code to gain entry into the building. The code can be up to six digits long. If no code is required, this can be left blank.

- **NAME** – A name of up to 16 characters can be programmed for each user location. This could be a tenants name or a company name etc.

MENU OPTIONS

File

New - Create a new data file

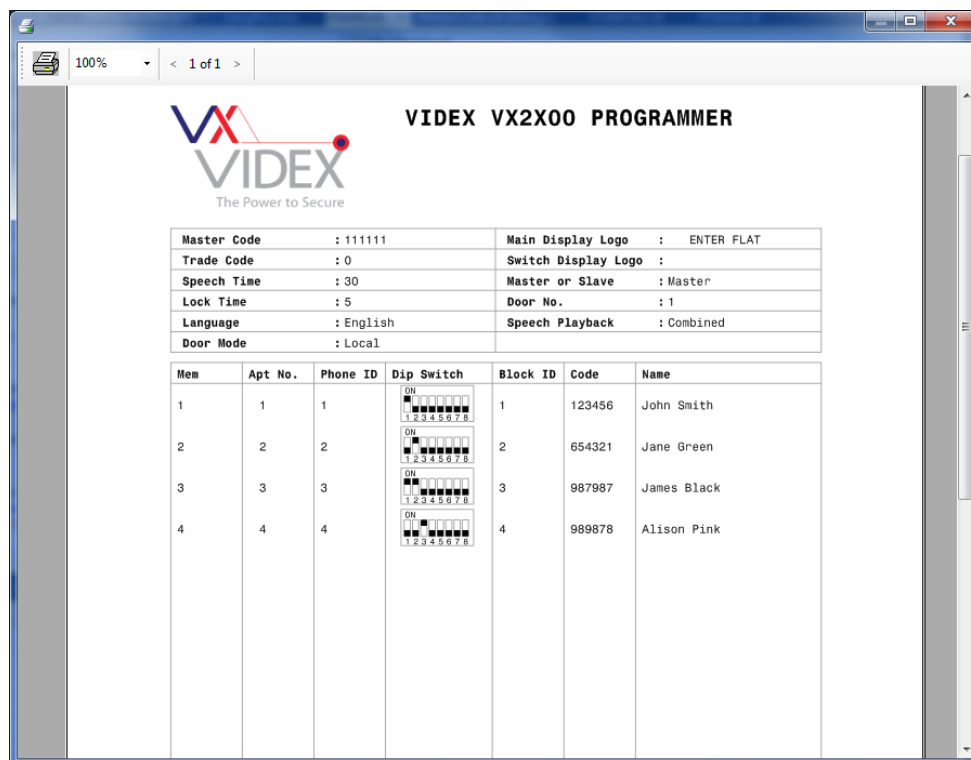
Open – Open a previously saved data file

Open Recent – A list of recently opened files

Save – Save the current file

Save As – Save the current file as a new name

Print – Print the data from the data file in a user friendly layout. Additionally the dip switch setting for each apartment will be displayed.

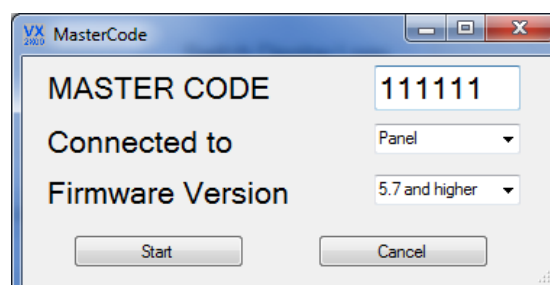


Import old dat file – If you have an old dat file from a 254 location door panel save you can import it here. This will create a new file in the new format.

Exit – Close the program

Download

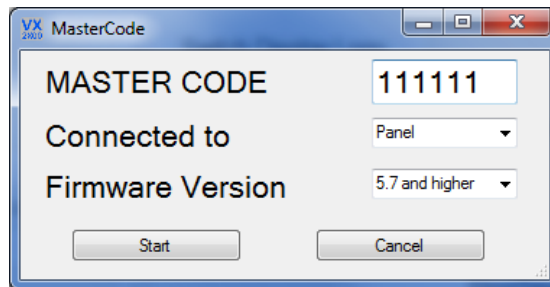
Download the data from the Videx device. The following window will appear: -



Enter the password currently setup in the Videx Device. Choose the device to upload to and select the firmware version in the device you are connected to then click 'Start'. The download process will begin.

Upload

Upload All – Upload all settings and users to the Videx Device. The following window will appear: -



Enter the master code currently in the Videx device, choose the type of device and the firmware version of the device and then click 'Start'. The data will be upload to the Videx device.

Upload Only Block – For use with systems that have two levels and are using the 2206N bus exchange devices. Choose the block ID of the block panel you are connected to and then click Upload'. All the setting will be uploaded but only the users whose block ID matches the selected block ID will be uploaded to the panel. From the same menu you can also choose to automatically remove leading and trailing letters from the apartment number uploaded.

Sort

Using the sort facility it is possible to arrange the user data into either alphabetical order using the user name or numerical order using the flat number.

By Name Sorts the users into Name order using the Name field.

By Apartment No. Sorts the users into apartment number order using the Apt No. field.

Language

The Program can be displayed in the list of languages available.

Auto Fill

The auto fill feature allows blocks of apartment numbers, phone ID's and block ID's to be added quickly.

Apartment No

From Mem Select the start memory location to begin the fill.

To Mem Select the memory location to fill to.

From Apt. No. Enter the first apartment number

Odds or evens only Tick this box to increment in 2s

Start Click start to populate the apartment numbers based on the information entered above.

Phone ID

From Mem Select the start memory location to begin the fill.

To Mem Select the memory location to fill to.

First Phone ID Enter the first phone ID

Start Click start to populate the phone ID's based on the information entered above. The phone ID will increment by 1.

Block ID

From Mem Select the start memory location to begin the fill.

To Mem Select the memory location to fill to.

Block ID Enter the 2206N device block ID

Start Click start to populate the block ID's based on the information entered above. The block ID's will not increment.

Baud


Baud rate for the serial connection to the Videx device.

About


Version number and date of the software release.

GETTING STARTED

To create a new file and upload it to the Videx Device

- Connect to a Videx device
- Run the program by either clicking on the desk top icon or by selecting the program from the start menu 
- Select File>New and create a new file.
- From the Settings Tab choose the system you are programming (2200 or 2300)
- Edit the Settings on the Settings tab as required.
- On the apartment tab, enter the details for all the apartments to be programmed.
- Select File>Save
- Select Upload>Upload All
- Enter the details on the Master code window and click Start. The data will be uploaded to the Videx device.

To download the data from a Videx device.

- Connect to a Videx device
- Run the program by either clicking on the desk top icon or by selecting the program from the start menu 
- Select Download
- Enter the details on the Master code window and click Start. The data will be downloaded to the PC (Note. It is not possible to download from a concierge).



- When the download completes select File>Save to save the downloaded data.

SYSTEM REQUIREMENTS

- Windows XP Service Pack 3 or Later
- DotNet framework 4 or later
- CD Drive (For installation only)
- USB port or RS232 port

KIT CONTENTS

- 2X00PC CD-ROM
- USB driver CD
- USB cable
- Art.481 USB – RS232/RS485 converter
- RS232 stereo jack to 9 pin D type cable
- Instruction manual

LICENCE AGREEMENT

This software once purchased can be used on as many Videx devices as required and under the control of the company which purchased the software but the CD cannot be copied or redistributed.

Videx Security Ltd

Southern Office

1 Osprey, Trinity Park,
Trinity Way,
London,
E4 8TD

TEL: 0870 300 1240
FAX: 0208 523 5825

Northern Office

Unit 4-7 Chillingham Ind. Est.,
Chapman Street,
Newcastle Upon Tyne,
NE6 2XX

TEL: 0870 300 1240
FAX: 0191 224 5678

TECHNICAL SUPPORT

TEL: 0191 224 3174
FAX: 0191 224 4938
EMAIL: tech@videxuk.com

www.videxuk.com