

INTRODUCTION

This application note will show you how to update a EWS/EWSi controller firmware using the Portal Plus software.

HARDWARE REQUIREMENTS

Art.481 – USB to RS485/RS232 converter with USB cable and USB Driver installation disc (for EWS).

Crossover cable, patch cables and switch.

12v DC 1.5A psu.

RS485 cable.

SOFTWARE REQUIREMENTS

Portal Plus software.

NOTE

If your EWS/EWSi controller is already installed then jump straight to page 7 'confirming and updating the firmware'.

SOFTWARE INSTALLATION

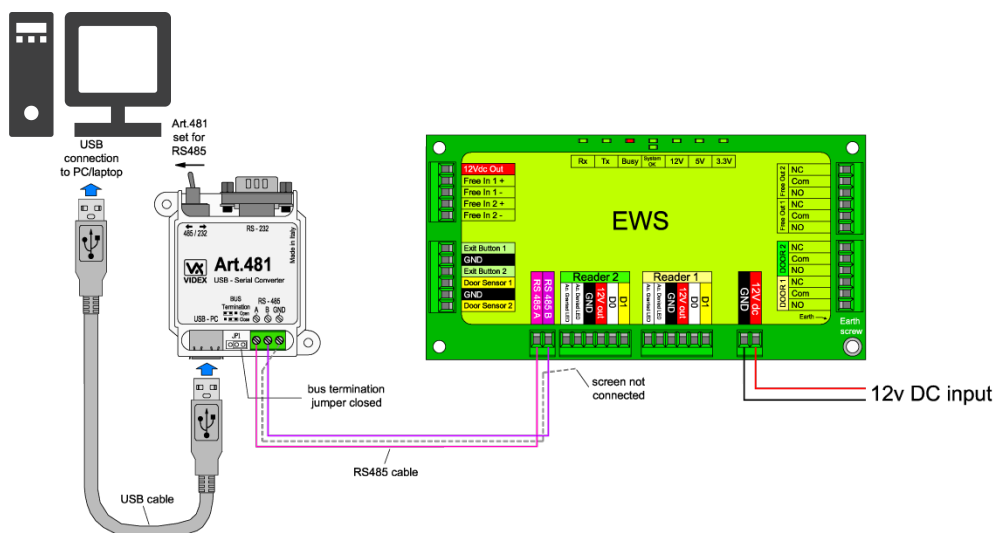
The Art.481 installation disc contains the 'USB driver CDM20814_Setup.exe' file and 'Driver installation Art.481.txt' document (this is only required if using the Art.481 – USB to RS485/RS232 converter). Before connecting the USB cable to the PC/Laptop, first install the Art.481 driver (see application note AN0002) and then install the Portal Plus software from the installation CD.

After the Art.481 driver and Portal Plus software have been installed connect the USB cable into the PC/Laptop USB com port.

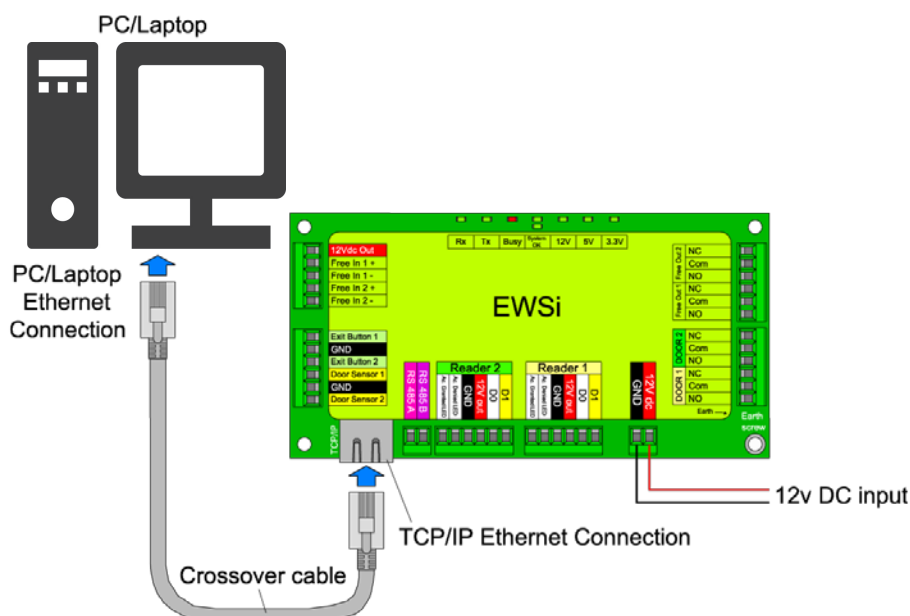
HARDWARE SETUP

- EWS Connection using RS485 with Art.481 to PC/laptop**

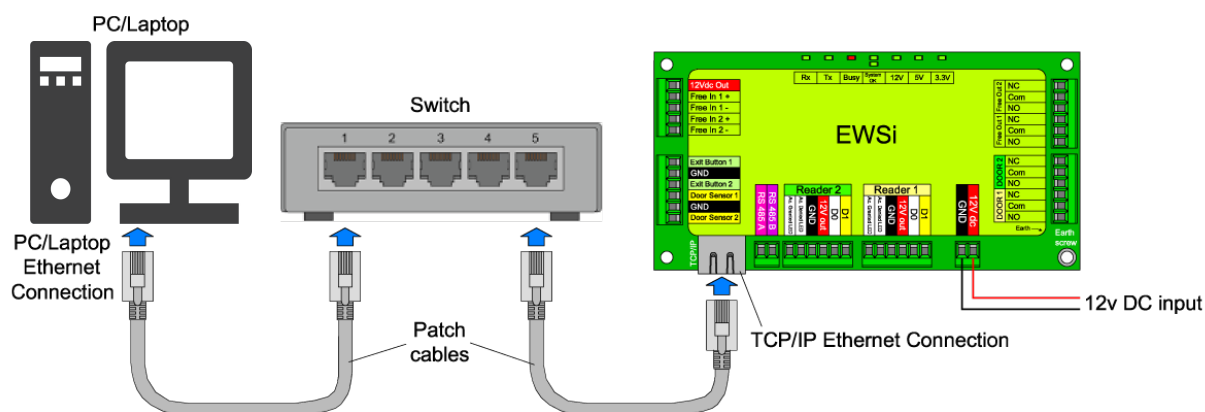
If using an EWS controller connect as shown below.



- **EWSi Connection using crossover cable to PC/laptop**
If using an EWSi controller connect as shown below.



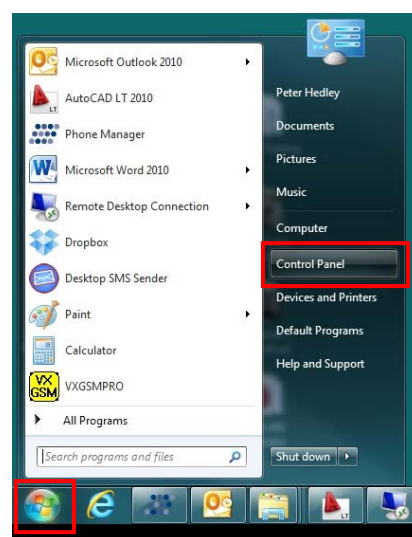
- **EWSi Connection using patch cables via a switch to PC/laptop**
If using an EWSi controller with a switch connect as shown below.



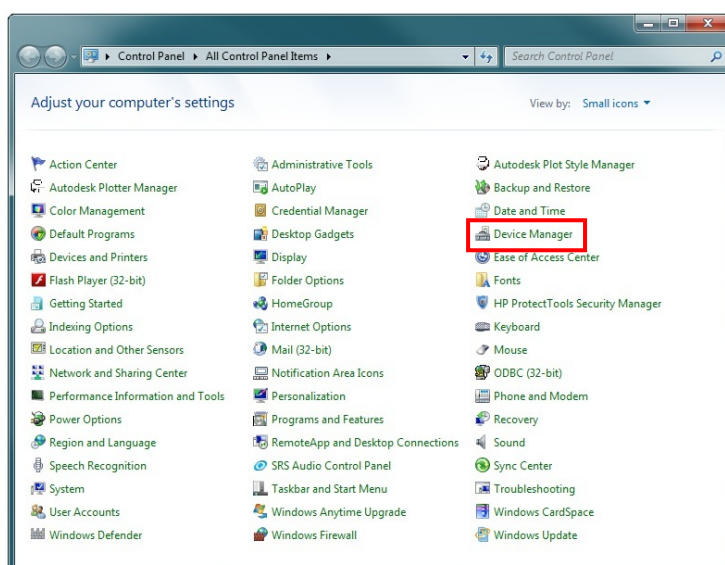
CONFIRMING USB COM PORT ON PC/LAPTOP

These first steps are simply to confirm you are using the correct com port and it is set up properly on your PC/laptop. There are many ways to do this depending on your windows set up. These steps present one of them (also see appendix for windows vista/windows 2000/XP).

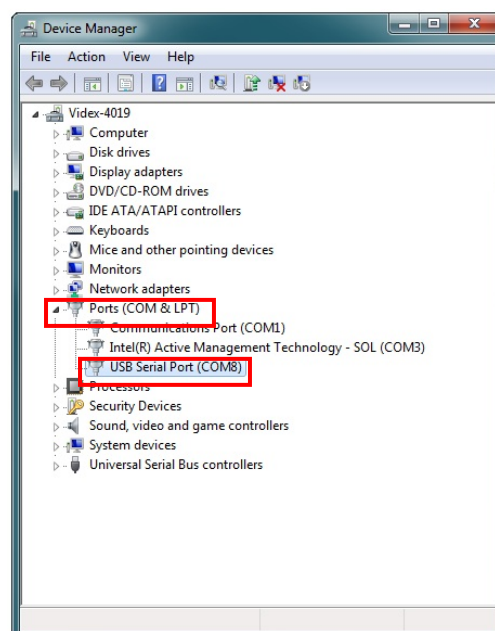
Click on the start menus Windows icon in the bottom left of the screen and select 'Control Panel' from the list on the right hand-side.



The following 'control panel' window will appear. Click on 'Device Manager' option.



The 'Device Manager' window will appear. From the list select the 'Ports (COM & LPT)' and expand the list. Make a note of the USB Serial Port number, in this example 'USB Serial Port (COM8)' is displayed.

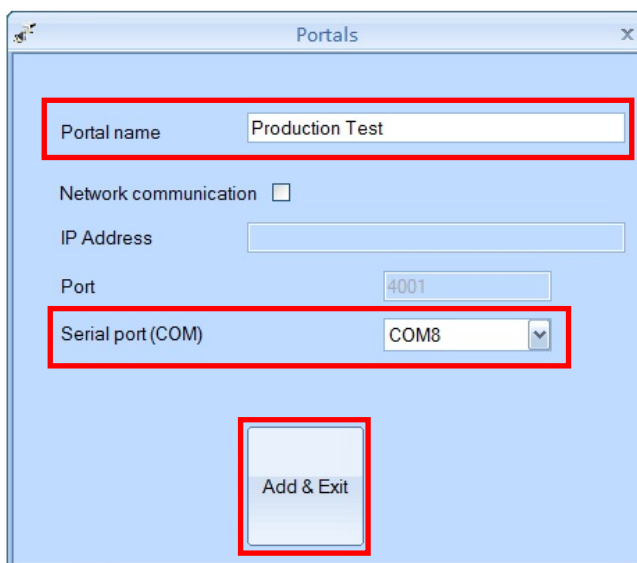


Close the 'Device Manager' window and exit out of 'Control Panel'.

ADDING A PORTAL

- **IF USING AN ART.481 AND RS485 CABLE**

Open Portal Plus software. Highlight 'Portals' right-click and select 'Add Portal'. Enter a Portal name, in this example 'Production Test', select the com port number from the drop down menu (in this case COM8, then click on 'Add & Exit'.

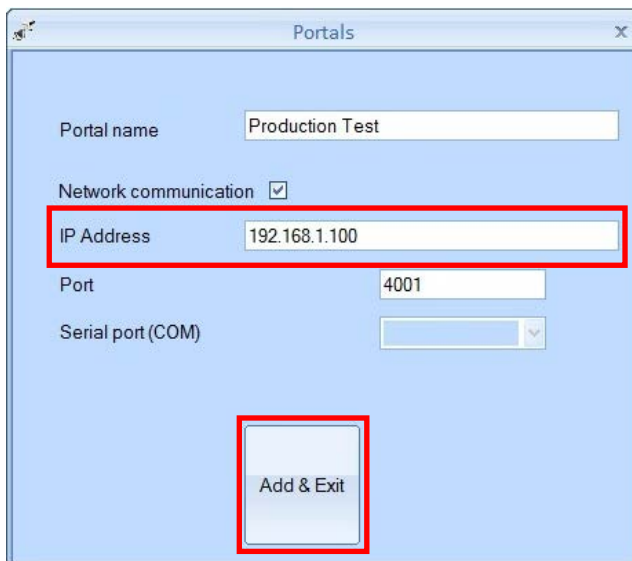


The screenshot shows the 'Portals' dialog box with the following fields and values:

- Portal name: Production Test
- Network communication: ☐
- IP Address: (empty)
- Port: 4001
- Serial port (COM): COM8
- Add & Exit button: (highlighted)

- **IF USING A Crossover CABLE OR 2xPATCH CABLES VIA A SWITCH**

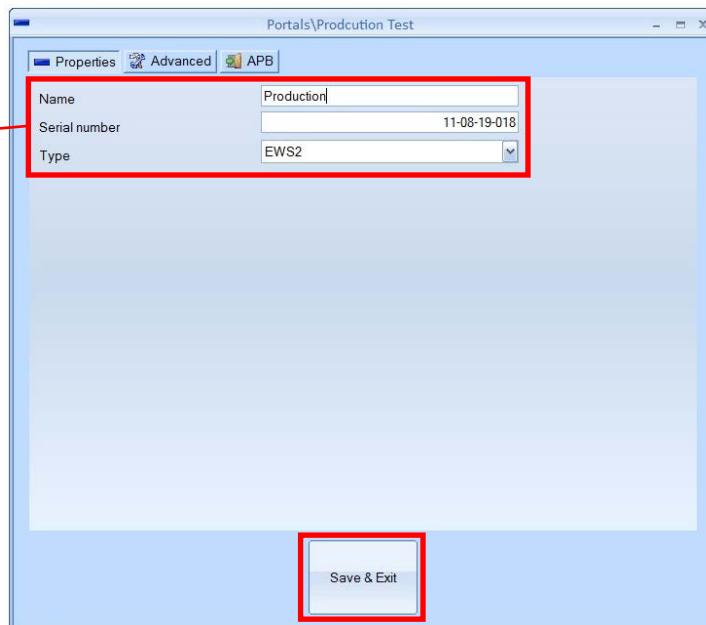
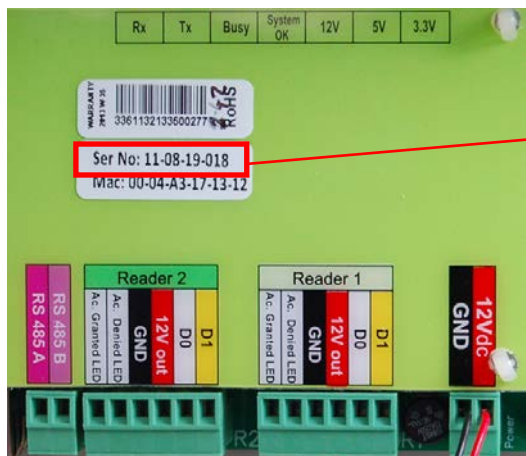
Open Portal Plus software. Highlight 'Portals' right-click and select 'Add Portal'. Enter a Portal name, in this example 'Production Test'. This time tick the 'Network communication' box and enter the EWSi IP Address of the controller (in this case the default IP Address 192.168.1.100 is being used) in the 'IP Address' field, leave the 'Port' field as '4001', click on 'Add & Exit'



The screenshot shows the 'Portals' dialog box with the following fields and values:

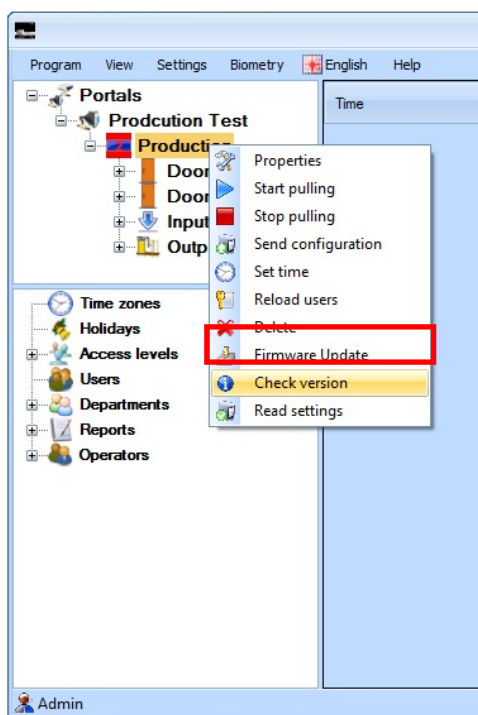
- Portal name: Production Test
- Network communication: ☒
- IP Address: 192.168.1.100
- Port: 4001
- Serial port (COM): (empty)
- Add & Exit button: (highlighted)

Next Highlight the Portal 'Production Test' right-click and select 'Add Controller' and select 'EWS2'. Enter a controller name, in this example 'Production', the serial number of the controller (this can be found on a label on the EWS/EWSi controller, see below) and select type 'EWS2' then click on Save & Exit'.



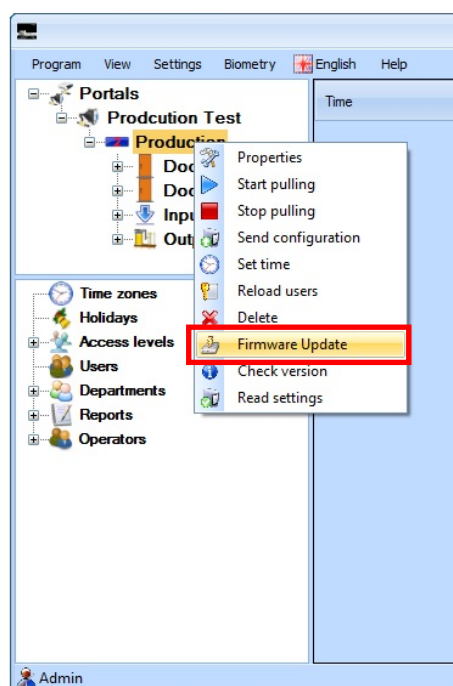
CONFIRMING AND UPDATING THE FIRMWARE

Next highlight the controller from the drop down list, in this case 'Production' controller, right-click and select 'Check version' from drop down list (see below left). The events table on the right hand side should confirm the device is online and the current EWS software version (in this example EWS Version 2.42, see below right).



Event	User
Device online	Type: EWS Version: 2.42

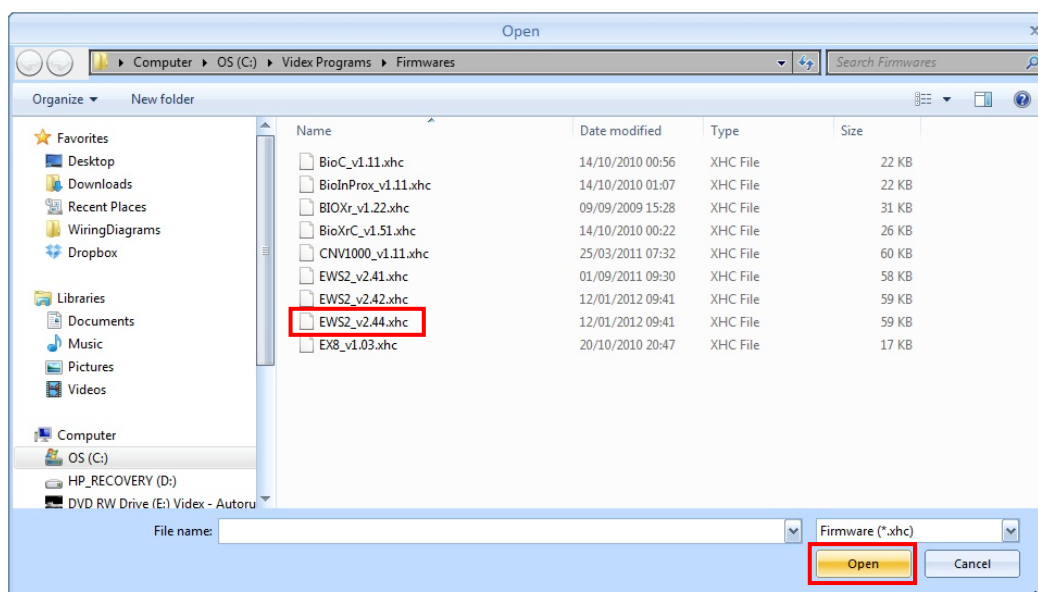
If a newer EWS firmware version is available then highlight the controller from the list, right-click and select 'Firmware Update' from the drop down list.



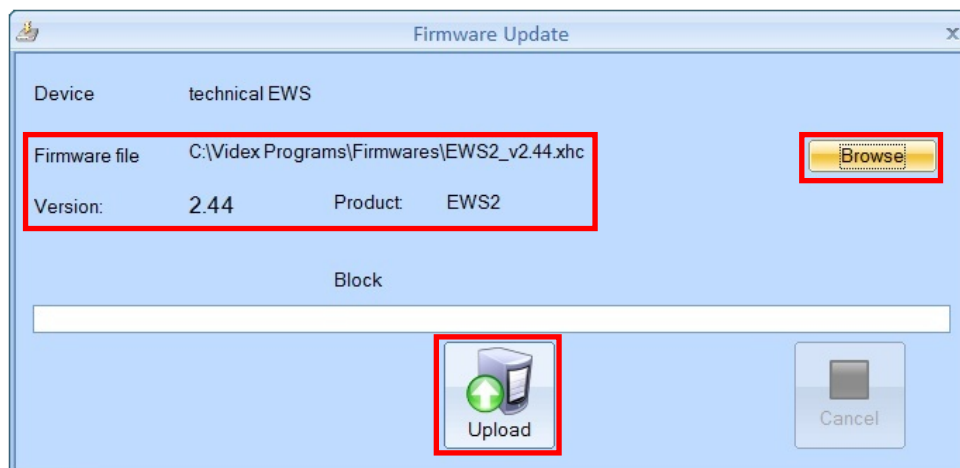
When the Firmware Update window appears click on 'browse' and the Firmwares folder should open containing the latest firmware updates.



Next select the latest EWS firmware file from the Firmwares folder (firmware files contain the file extension '.xhc') then click on open.

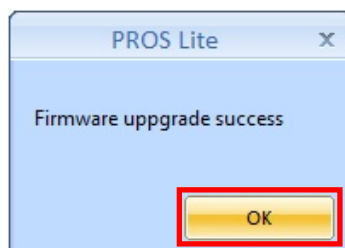


The Firmware Update window will appear again, make sure the correct Firmware file has been selected and the correct version number is displayed (in this example version 2.44 is being used) then click on 'Upload'.



DO NOT UNPLUG OR POWER DOWN UNIT UNTIL UPLOAD IS COMPLETED

Once the upload has finished the Pros Lite confirmation window will appear, click on ok.



To confirm the EWS/EWSi controller has been updated properly simply repeat the previous step to 'check version' (page 7) and confirm the latest firmware was installed