

INTRODUCTION

This application note explains how to do the initial setup and programming of the VR120/138-SDP scroll facility digital VR panel using the 2X00PC programming software (SP37).

HARDWARE REQUIREMENTS

VR120/138-SDP panel (*UIM-138 display module and 138N speaker amp*), USB cable, PC/laptop.

SOFTWARE REQUIREMENTS

2X00PC programming software (SP37), version 7.0.0.7 (or later).

2X00PC SOFTWARE INSTALLATION

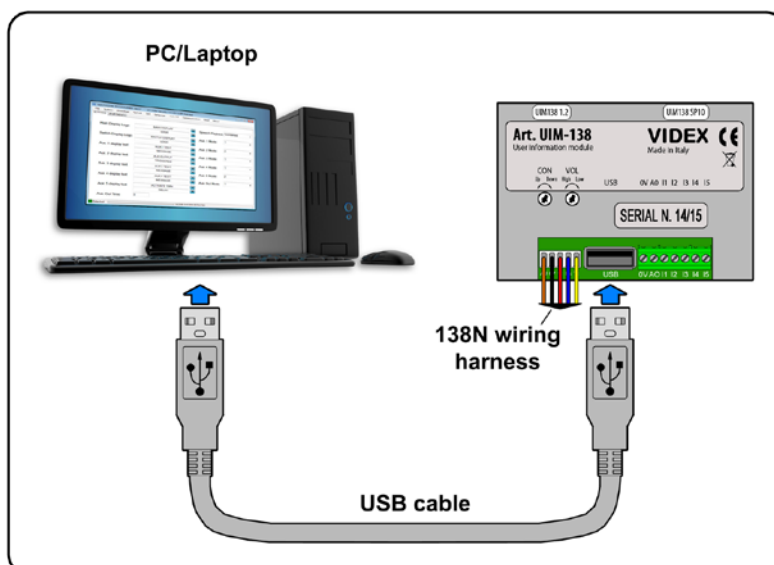
1. Insert the 2X00PC installation CD into the CD rom drive of the PC/laptop.
2. Select 'RUN' from the start menu.
3. Type in 'D:\setup.exe' then press the 'OK' button.
4. Follow the on screen instructions on the VX2X00PC Setup wizard.

USB DRIVER INSTALLATION (*also refer to AN0002 Art.481 Driver Installation*)

1. Insert the 2X00PC installation CD into the CD rom drive of the PC/laptop.
2. Select 'RUN' from the start menu.
3. Type in 'D:\CDM20824_Setup.exe' then press the 'OK' button.
4. The relevant drivers for the USB cable will be installed.

LAUNCHING THE 2X00PC SOFTWARE

After installing the 2X00PC software and USB driver connect the USB cable between the PC/laptop and the UIM-138 display module, as shown below.



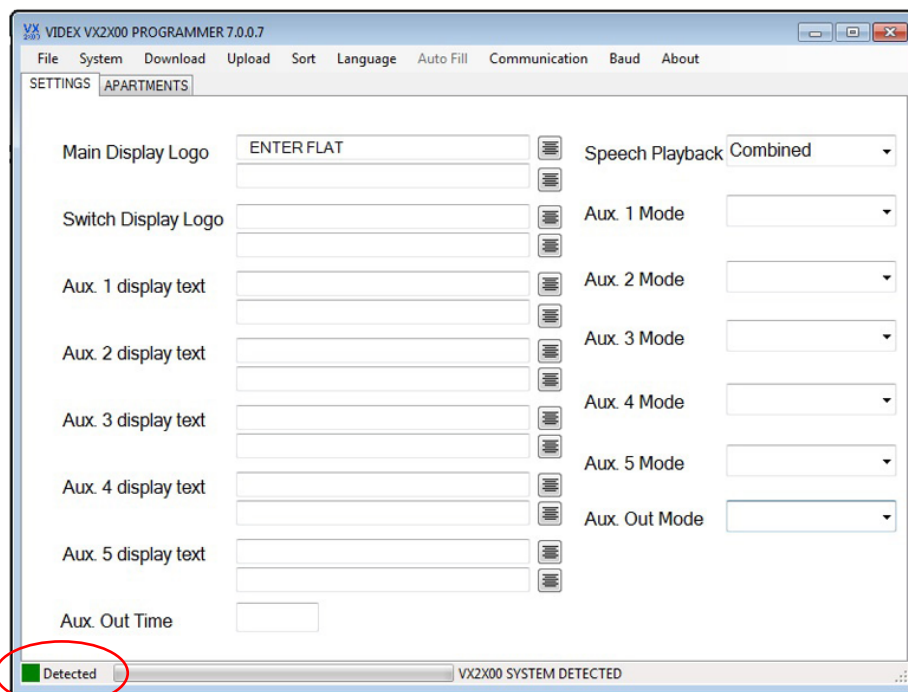
Ensure that there is 12Vdc power connected to the 138 speaker amp. 'Double click' on the 2X00PC desktop icon to launch the software.

The initial launch window will appear, as shown below. At the top of the window the software will show that it is checking for any devices connected to the PC or laptop. After a brief period the main programmer screen will appear.



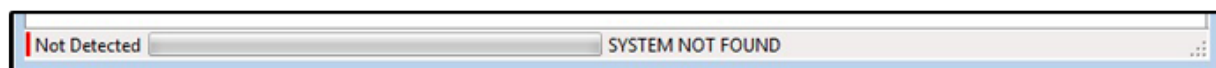
MAIN PROGRAMMER SCREEN

If the UIM-138 display module has been detected the status bar will be updated with a green detected 'square' in the bottom left corner of the main programmer screen, as shown below.



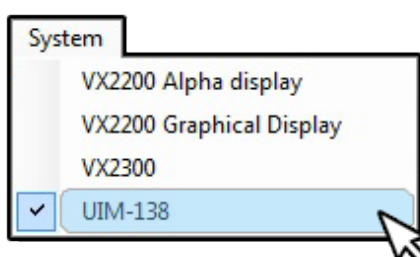
On this screen several programming options can be selected.

If for any reason the programming software has not detected the UIM-138 display module this will be shown on the status bar at the bottom of the screen, as shown below.

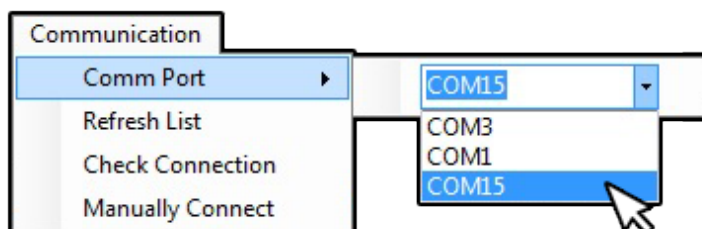


If this is the case then take the following steps to connect to the UIM-138 display module:

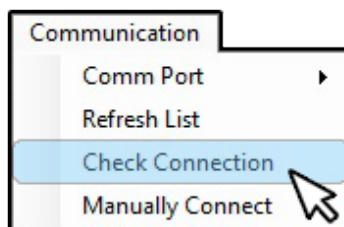
1. From the top menu bar select 'System'.
2. From the drop down menu make sure that 'UIM-138' has been selected and ticked, as shown below.



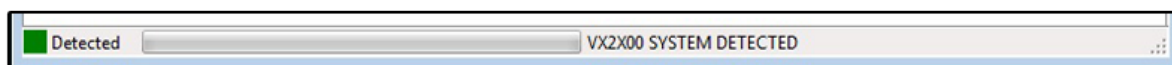
3. Next from the top menu bar select 'Communication'.
4. From the drop down menu click on 'Comm Port' and then select the Com port that the UIM-138 display module is connected to from the drop down list, as shown below.



5. Select 'Communication' again from the top menu bar and then select 'Check Connection' as shown below (*the 2X00PC software will search through all the COM port connections until it finds the UIM-138 display module*).



6. Once the UIM-138 display module has been found the status bar at the bottom of the main programmer screen will update, as shown below.



THE DEFAULT SETTINGS ON THE MAIN PROGRAMMER SCREEN

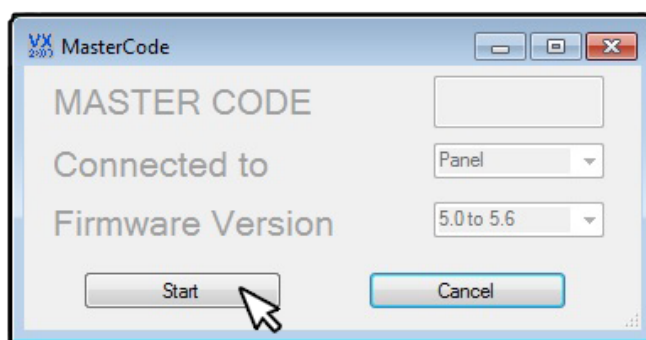
In the 'Main Display Logo' field the default logo 'ENTER FLAT' will be shown. When the UIM-138 display module is being used as a search and scroll panel this will need to be edited.

When VR120/138-SDP scroll panels leave the factory the main display logo and the mode for auxiliary inputs 1, 2 and 3 will already be set for the search and scroll option. Because of this before any other programming on the panel begins a download from the panel **must** be done first. To do this, follow the steps below:

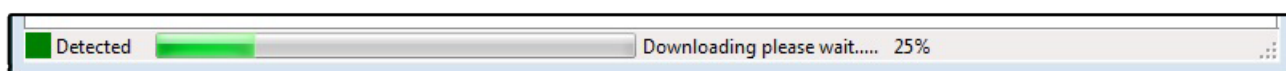
1. On the main programmer screen from the top menu bar select 'Download'.
2. From the drop down menu click on 'Download All', as shown below.



3. The master code window will appear, click on the 'start' button, as shown below.



At this point the 2X00PC software will download the default settings already stored in the UIM-138 display. The status bar along the bottom of the main programmer screen will show the download's progress, as shown below.



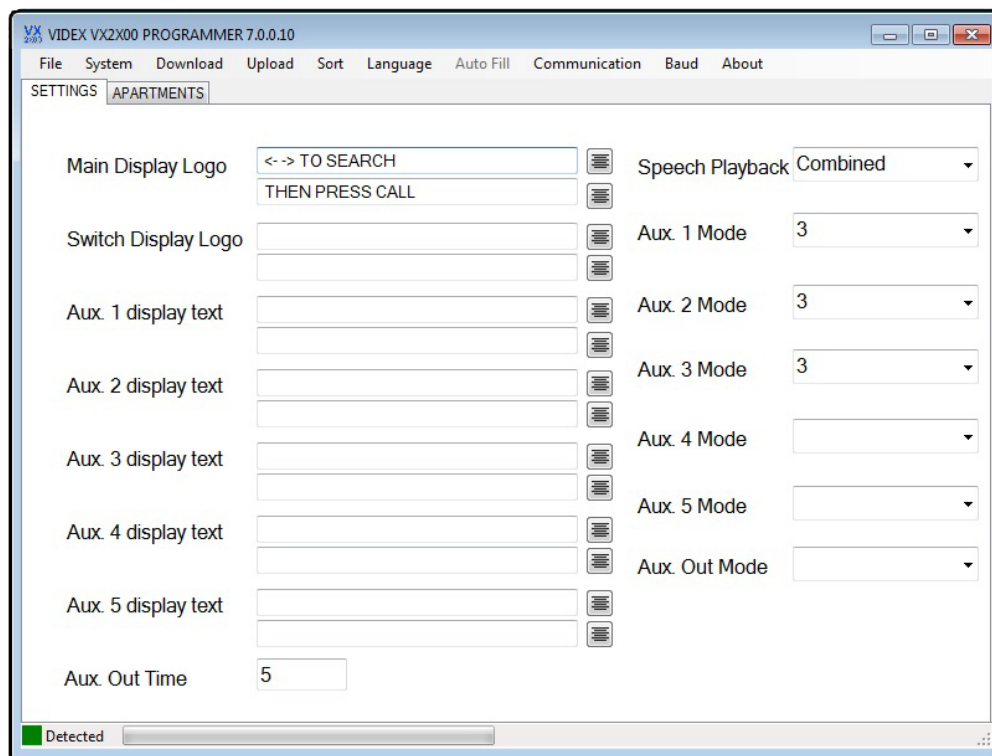
The display on front of the panel will also show the download's progress, as shown below.



After the download has completed the settings on the main programmer screen will show the new default settings from the panel, as shown on page 5.

SEARCH AND SCROLL DEFAULT PANEL SETTINGS

Below shows the default search and scroll settings downloaded from the UIM-138 display in the main programmer screen window, under the 'settings' tab.



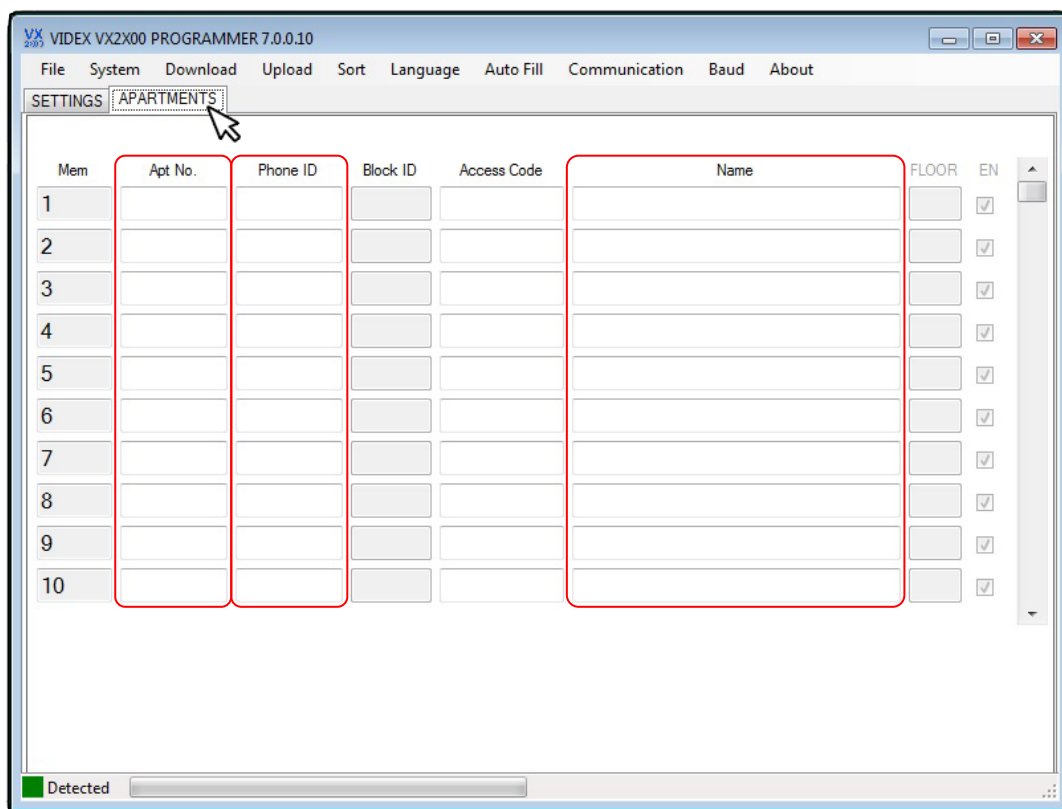
The following fields will already be set with the following:

Main Display Logo (<i>top line</i>)	=	<- -> TO SEARCH
Main Display Logo (<i>bottom line</i>)	=	THEN PRESS CALL
Speech Playback	=	Combined
Aux. 1 Mode	=	3
Aux. 2 Mode	=	3
Aux. 3 Mode	=	3
Aux Out Time	=	5

Theses default settings **DO NOT** need to be changed they can stay the same. If for any reason none of these default settings download from the panel then simply enter the information shown above into the appropriate fields under the 'settings' tab (*see above*) on the main programmer screen.

PROGRAMMING THE FIELDS UNDER THE APARTMENTS TAB

Next click on the 'apartments' tab on the main programmer screen, as shown below.



The main panel programming can be completed in the appropriate fields. The 'Block ID' and 'Access Code' fields can be left blank.

THE APARTMENT NUMBER FIELD (*Apt No. column*)

If there are flats or apartments on the system then the 'Apt No.' column can be completed with this information (e.g. 1, 2, 3 etc. or apartments 1A, 1B, 1C etc.). If there are no flats or apartments, but there are office or company names instead, then this column can be left blank.

THE PHONE ID FIELD (*Phone ID column*)

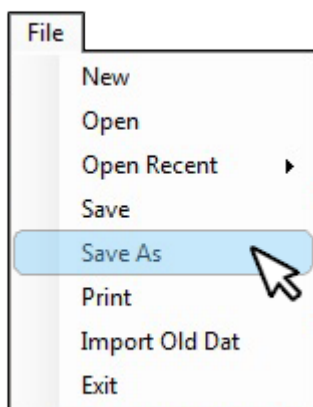
The 'Phone ID' column **must** be completed. The phone ID is the 'dip-switch' address/setting of the intercom phone in the flat, apartment or office. If this field is not completed then the panel will not be able to call the intercom phone.

THE NAME FIELD (*Name column*)

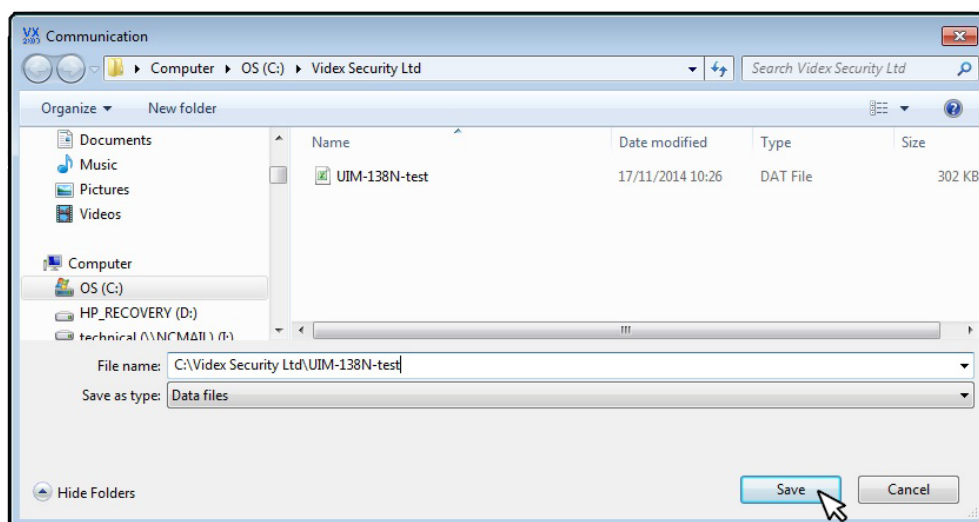
The 'Name' column **must** also be completed. The name can refer to the name of the user in the flat or apartment. It can also refer to an office name or a company name. If this field is not completed then the user will not be able to 'search and scroll' through the flat number, apartment number or office name on the panel and make a call. In this instance when a user attempts to scroll through using the scroll buttons on the front of the panel, the panel will simply emit a beep and the Main Display Logo will remain on the panel display. After all appropriate fields have been completed it is recommended that a file of these settings and panel programming be saved first before uploading them back into the panel.

SAVING ALL SETTINGS AND PANEL PROGRAMMING

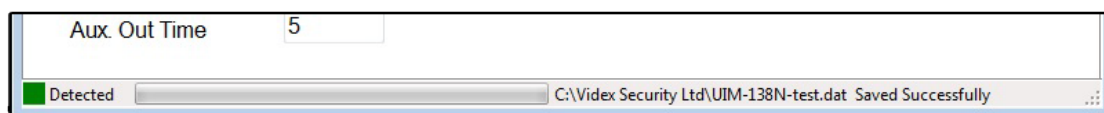
From the top menu bar select 'File' and then from the drop down list click on 'Save As', as shown below.



The 'Communication' saving window will appear, as shown below.



Select a location of where to save the file and create a file name and then click on the 'Save' button (see above). The file will be saved. Confirmation of this can be seen on the status bar at the bottom of the main programmer screen, as shown below.



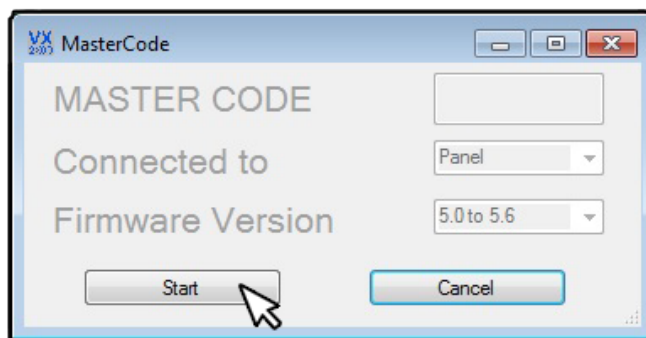
UPLOADING THE SETTINGS AND PROGRAMMING BACK INTO THE PANEL

After a copy of the settings and panel programming have been saved then this information can be uploaded back into the panel.

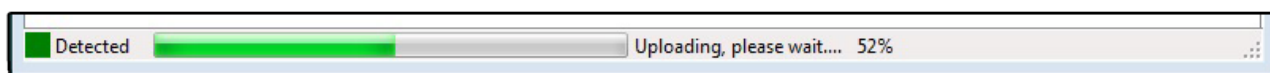
From the top menu bar select 'Upload' and then from the drop down list click on 'Upload All', as shown below.



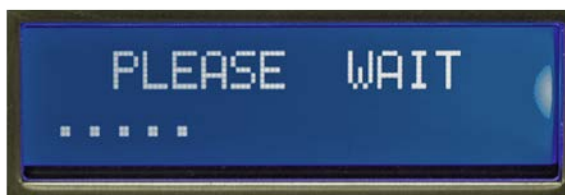
The master code window will appear, click on the 'start' button, as shown below.



The settings and panel programming will upload to the panel. The status bar along the bottom of the main programmer screen will show the upload's progress, as shown below.



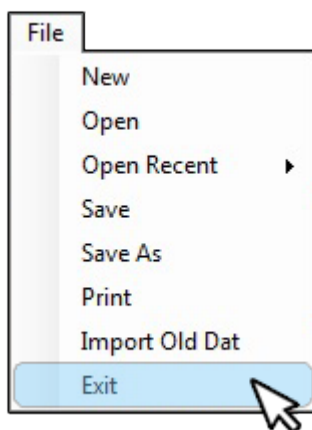
The display on front of the panel will also show the upload's progress, as shown below.



After the upload has completed the panel display will show the default Main Display Logo again, as shown below.



When all programming has finished exit out of the 2X00PC software by selecting 'File' from the top menu bar and clicking on 'Exit' from the drop down list, as shown below.



Unplug the USB cable from the UIM-138 display module. The system is now ready to use.

To confirm the upload was successful use the 'search and scroll' (← →) buttons on front of the panel to scroll through and check that the flat numbers, apartment numbers or office names have been stored.

Further programming and setup information can be found in the UIM-138 User Interface Technical Manual Edition 1.0. *(or later)*.