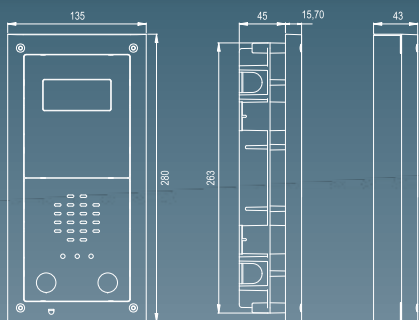


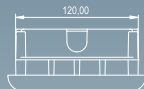
CVR4KV-1S



2 push button panel  
Posto esterno a 2 pulsanti  
Poste extérieur à 2 boutons  
Placa exterior 2 botones

Flush  
Incastro  
Encastrament  
Por empotrar

Surface  
Superficie  
Superficie  
Superficie



**CVR4KV SERIES VIDEOKIT**



The CVR4KV is a new range of vandal resistant videokits. Developed from the popular VK4K videokit, the VR4KV offers a number of operating features and allows greater flexibility for installation. The face plate is manufactured from 2.5 mm stainless steel.

- Up to 4 outdoor stations (video or audio only) with 2 call push buttons calling 2 independent apartments;
- Up to 3 peripheral devices connected in parallel to each videophone (additional videophone, extension sounder, telephone handset etc.);
- Disable Friendly - Acoustic & Visual signalling of the system status (conversation in progress, busy and door open signalling);
- Recall (selective entrance recall on systems with 2 or more outdoor stations);
- Intercommunication between internal videophones;
- Local call tone which is different from the external push button call tone;
- Videophone incorporates "Privacy" On/Off facility (with either latched or timed activation of privacy);
- Programmable Call, conversation and door opening times;
- Dry relay contacts for electric lock;
- Power supply can be connected to the videophone or the outdoor station.

**CVR4KV-1**

One button videokit comprising of:

**1 Outdoor station** including speaker unit module Art.VR4KAMK-1 and camera module Art.VR4KCMC comprising of high quality auto iris lens CCD Day/Night colour camera\* with infrared illumination LEDs plus two module flush mounting box with module support and hinge Art.4852. Standard finish: brushed stainless steel for the front plate and gun metal grey for the module support.

**1 Art.6256** Surface mount videophone incorporating a 3.5" Hi-Res full colour active matrix LCD monitor specific for "6 wire" videokit (CVK4K, CVR4KV and CVK8K range). It includes 4 buttons: "camera recall", "open door", "service" and "privacy".

2 LED's\*\* indicate the privacy activated and open door. Programmable privacy duration and number of rings. Intercommunicating call and door call. Adjustments: call tone volume switch (3 levels), picture hue, contrast and brightness.

**1 Art.850K** Power transformer in a Type A 5 module DIN box.

Packing: briefcase 45x41x10cm total weight 5.3 Kg.

**CVR4KV-2**

As CVR4KV-1 but two call button version speaker unit Art.VR4KAMK-2, 2 videophones Art.6256, 2 power transformers Art.850K and one video distributor Art.316N.

Packing: cardboard 26x29x25cm total weight 7 Kg.

**CVR4KV-1S, CVR4KV-2S**

As the flush mount versions but with surface mounting box (Art.4882).

Packing: the same as relevant flush model with total weight 5.6 Kg for one button version and 7.3 Kg for two button version.

The module support frame is available in other finishes, see pictures 5 on page 35 for available versions and additional suffix to use for orders.

The above colour kits can be ordered with an alternative model videophone, see page 36 and 37 to check their features, code, photos and dimensions.

\* Available also with Wide Angle camera option.

\*\* Some LED's require additional connections in order to work.

