

Art. VproX-20 1 door, 20 keys access control system

DESCRIPTION

The VIDEX Art. VproX-20 is an advanced access control system based upon the VIDEX unique Coded proximity Key giving over 4 billion combinations. The system will operate and control one door and store up to 20 proximity Tag or Card, the door can also have an additional reader. Connections from the reader to the control equipment can be made using un-shielded 5 core cable up to a distance of 200 meters, or a maximum resistance of 10 Ohms.

- Push to exit switch door will operate the relay in the control unit for the programmed entry/exit time.
- Security against sabotage, is maintained by having the Art. VproX-20 control equipment remote from the reader head. Should un-stored proximity keys attempt to operate the system, the control unit will disable the reader after every attempt, the duration of the reader disable time will increase if further attempts are made.
- The control equipment has two LEDs that confirms all data in programming mode.
- The system has 2 push buttons for programming the information.
- Using these buttons it is possible to:
 - » Program up to 20 unique proximity Tags.
 - » Delete one or more Tags.
 - » Know if a key is already programmed and its memory location.
- There is also a 2 Dip-Switch bank to program the door relay time (2-4-6-10 seconds).

INITIALISATION

When the installation has been completed (carried out in accordance with the supplied wiring diagram), the system can be powered up and programmed following the Art. VproX-20 programming flow chart, on completion the Art. VproX-20 is ready for use.

NOTE: we suggest to separate the Mains lines (lift, electricity, electric lock, etc.) from the reader connection line (at least 10 cm. far or use shielded cable for it) to avoid electrostatic discharge and magnetic influence which could give control problems to the CPUs present on the system.

OPERATION

In stand by mode, when a user put a stored proximity key on the reader, the reader LED's will display green and a sharp "beep" will be emitted. If the key is not programmed the reader LED's will display Red and a low "beep" will be emitted.

To operate relay for the programmed time (door open) a terminal "SW" to ground is required.

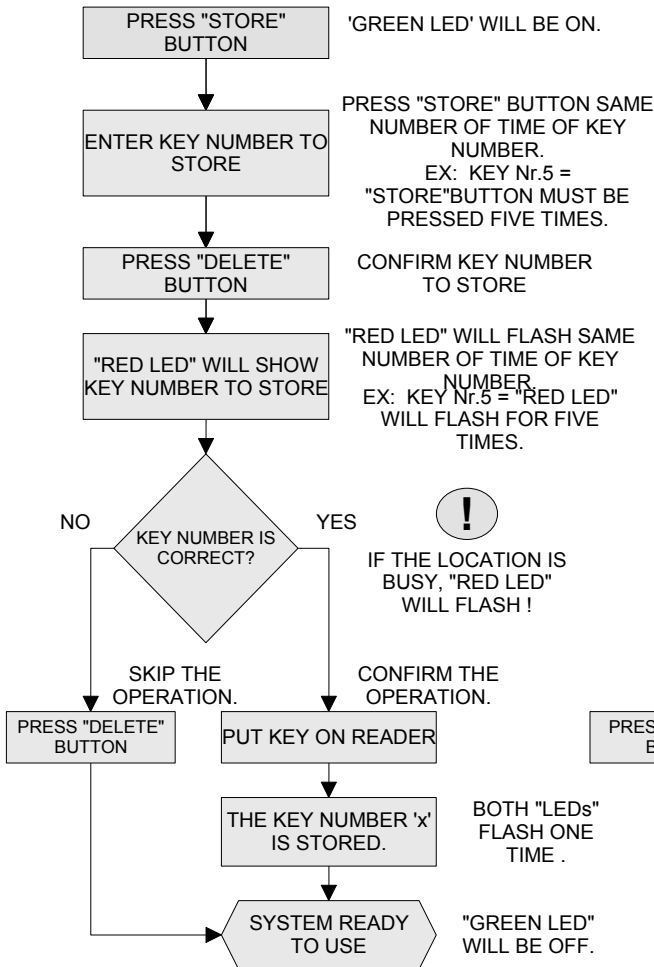
TECHNICAL SPECIFICATIONS

Storage capacity:	20 keys or Tags
Working voltage:	12V DC +/- 10%
Current (Quiescent):	Approx. 100mA
Current (During operation):	Approx. 200mA
Working temperature:	-10° +50° C
Lock output:	5A 30VDC Dry contact

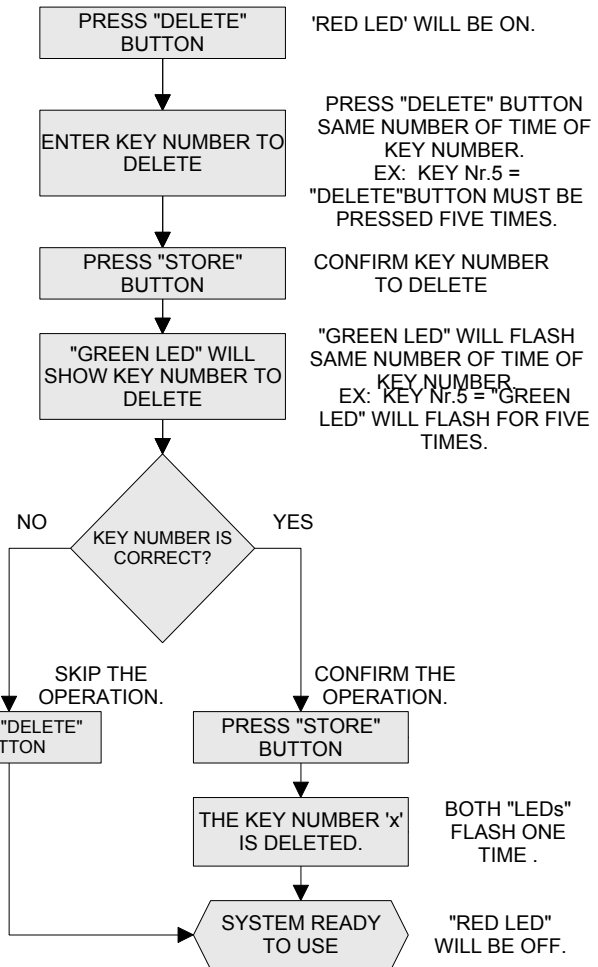
PROGRAMMING FLOW CHART

To program the system, please remove protection cover and use pushbuttons.

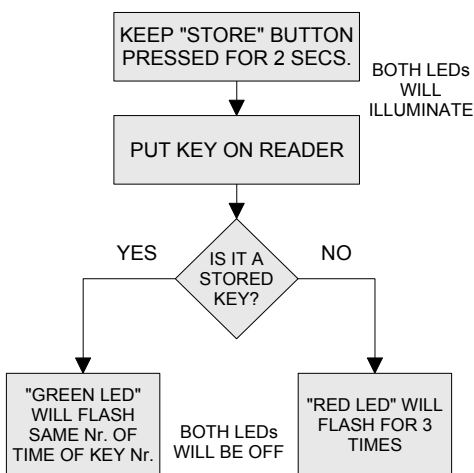
TO STORE A KEY



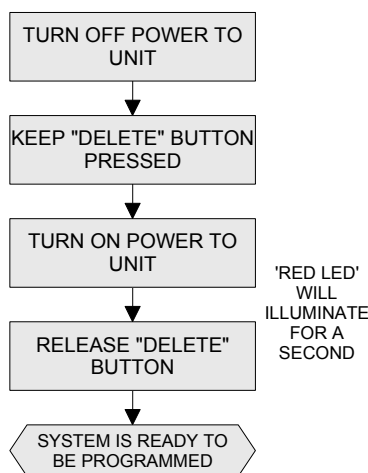
TO DELETE A KEY



TO READ KEY NUMBER



TO DELETE ALL KEYS

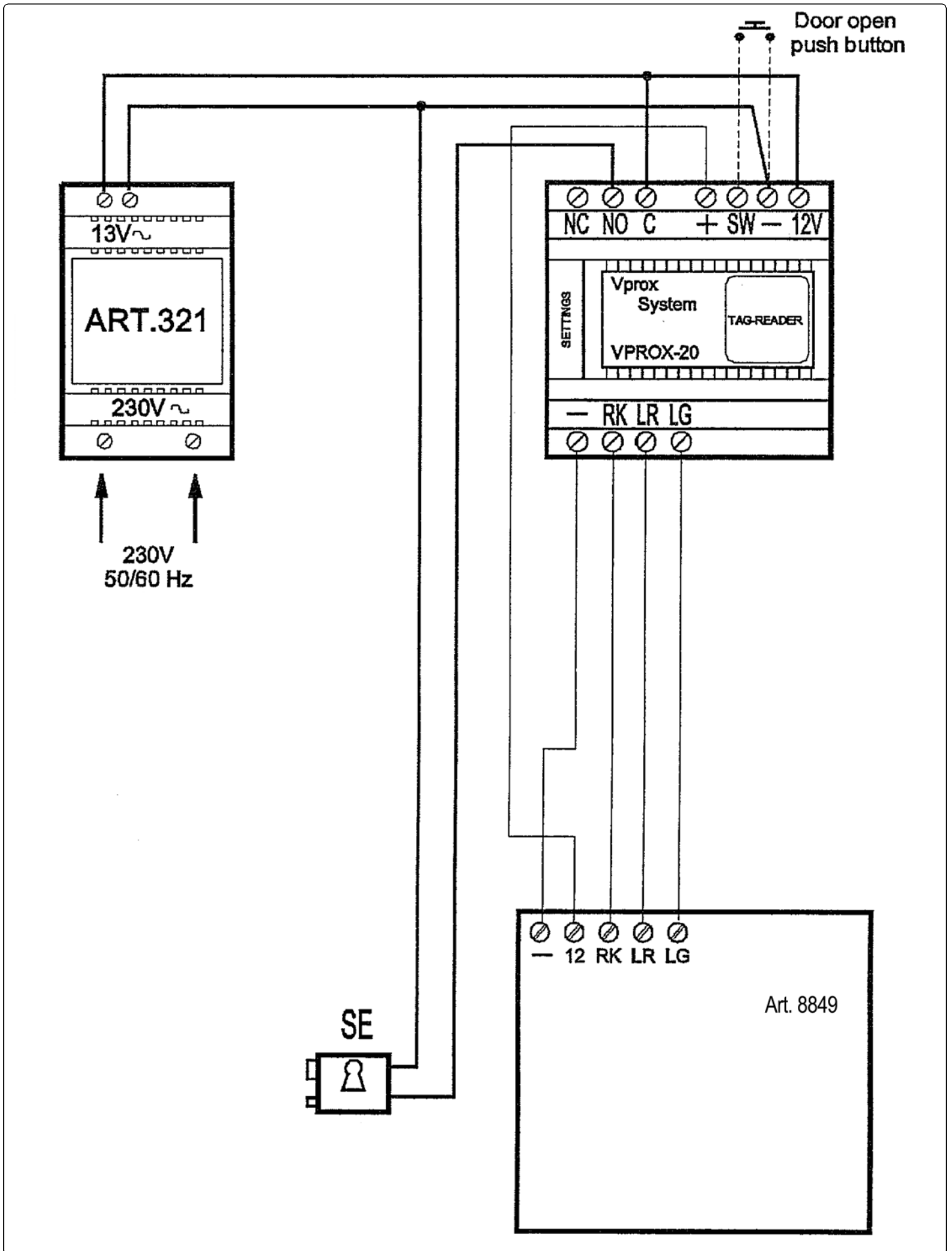


IT IS IMPORTANT THAT THE "DATA LIST" IS KEPT UP TO DATE AND STORED IN SAFE PLACE.

USERS DATA LIST	
User Name	Nr.
	1
	2
	3
	4
	5
	6
	7
	8
	9
	10
	11
	12
	13
	14
	15
	16
	17
	18
	19
	20

VIDEX Electronics Srl
 Technical line +39 0734 631669

VIDEX SECURITY (UK) Ltd
 Technical line 0191-224-3174



VIDEX ELECTRONICS S.P.A.

Via del Lavoro, 1 - 63846 Monte Giberto (FM) Italy
Tel (+39) 0734 631669 - Fax (+39) 0734 632475
www.videx.it - info@videx.it

*Main UK office:***VIDEX SECURITY LTD**

1 Osprey Trinity Park
Trinity Way
LONDON E4 8TD
Phone: (+44) 0870 300 1240
Fax: (+44) 020 8523 5825
www.videx-security.com
marketing@videx-security.com

*Northern UK office:***VIDEX SECURITY LTD**

Unit 4-7
Chillingham Industrial Estate
Chapman Street
NEWCASTLE UPON TYNE - NE6 2XX
Tech Line: (+44) 0191 224 3174
Phone: (+44) 0870 300 1240
Fax: (+44) 0191 224 1559

*Greece office:***VIDEX HELLAS Electronics**

48 Filolaou Str.
11633 ATHENS
Phone: (+30) 210 7521028
(+30) 210 7521998
Fax: (+30) 210 7560712
www.videx.gr
videx@videx.gr

*Danish office:***VIDEX DANMARK**

Hammershusgade 15
DK-2100 COPENHAGEN
Phone: (+45) 39 29 80 00
Fax: (+45) 39 27 77 75
www.videx.dk
videx@videx.dk

*Benelux office:***VIDEX BENELUX**

E3 laan, 93
B-9800 DEINZE
Phone: (+32) 9 380 40 20
Fax: (+32) 9 380 40 25
www.videxbenelux.be
info@videxbenelux.be

CUSTOMER SUPPORT

All Countries:

VIDEX ELECTRONICS S.P.A.

www.videx.it - technical@videx.it
Tel: +39 0734-631669
Fax: +39 0734-632475

UK Customers:

VIDEX SECURITY LTD

www.videx-security.com
Tech Line: 0191 224 3174
Fax: 0191 224 1559



The product is CE marked demonstrating its conformity and is for distribution within all member states of the EU with no restrictions. This product follows the provisions of the European Directives 2004/108/ECC (EMC); 2006/95/ECC (LVD) and 93/68/ECC (CE marking).